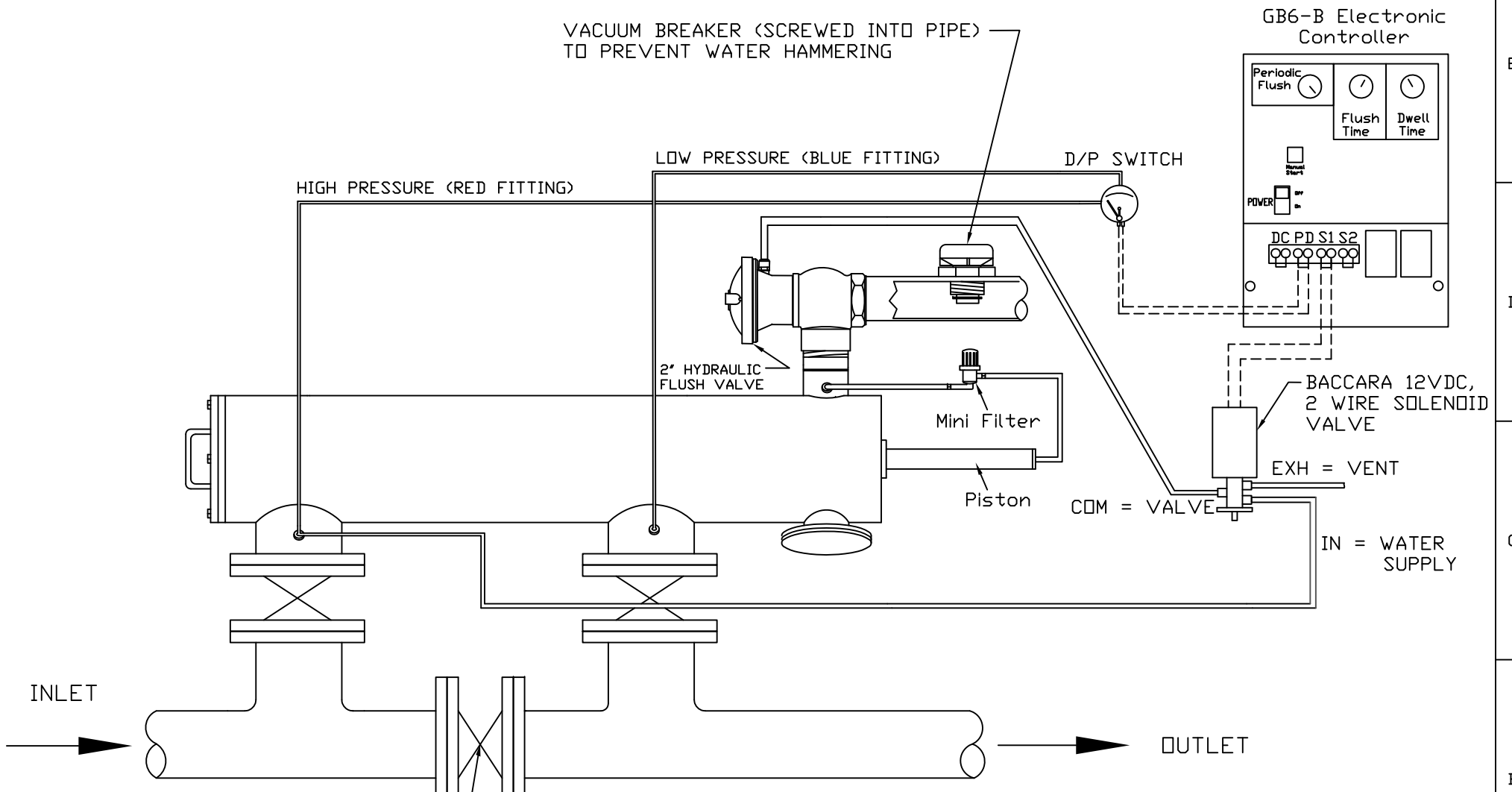


REVISIONS				
ZONE	REV	DESCRIPTION	DATE	APPROVED



INLET

OUTLET

BY-PASS VALVE

VACUUM BREAKER (SCREWED INTO PIPE) TO PREVENT WATER HAMMERING

HIGH PRESSURE (RED FITTING)

LOW PRESSURE (BLUE FITTING)

D/P SWITCH

2" HYDRAULIC FLUSH VALVE

Mini Filter

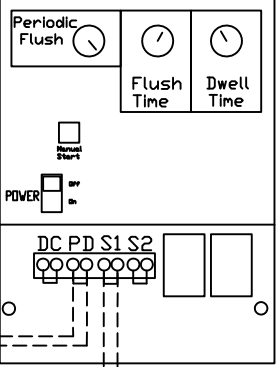
Piston

COM = VALVE

EXH = VENT

IN = WATER SUPPLY

GB6-B Electronic Controller



BACCARA 12VDC, 2 WIRE SOLENOID VALVE

Junction	○
No Junction	◐
Electric Connection	-----
Hydraulic Connection	=====

UNLESS OTHERWISE SPECIFIED DIMENSIONS ARE IN INCHES TOLERANCES		AUTOMATIC FILTERS, INC.		
DECIMALS ANGULAR		2672 S. LA CIENEGA BLVD.		
.XX ± .05 ± 0.5 DEG.		LOS ANGELES, CA 90034		
.XXX ± .01		(310) 839-2828 FAX (310) 839-6878		
DRAWN		TITLE		
S. PERKINSON		ABW FILTER WITH GB6-B ELECTRIC CONTROLLER, 2" HYDRAULIC FLUSH VALVE & BACCARA SOLENOID		
CHECKED		SIZE	DWG NO.	REV
DESIGN		A	WIRE-ABWGB6B-HFV-LAY-01	N/A
DATE		Not to Scale		SHEET 1 OF 1
12/03/12				